

# Industry Data and MEDIN: 10 years of the Marine Data Exchange

John Mitchell, Marine Data Advisor

The Crown Estate

View within:

Search any data

Library

Map

PREVIOUS 04 ——— 06 NEXT

## Discover a hidden world

Welcome to our new Discover page, filled with exciting content, such as stories from industry professionals, updates on our evidence projects, news and events, data insights and more.

Discover more

Scroll to discover more



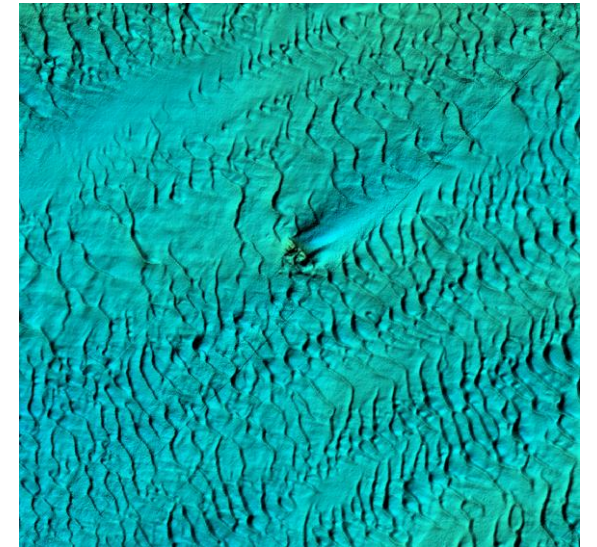
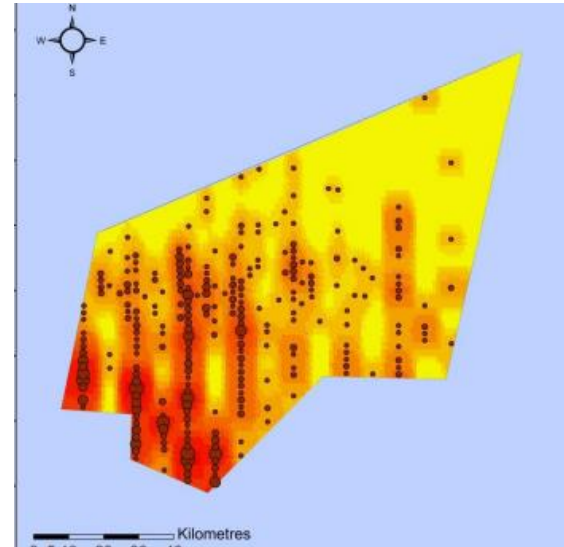
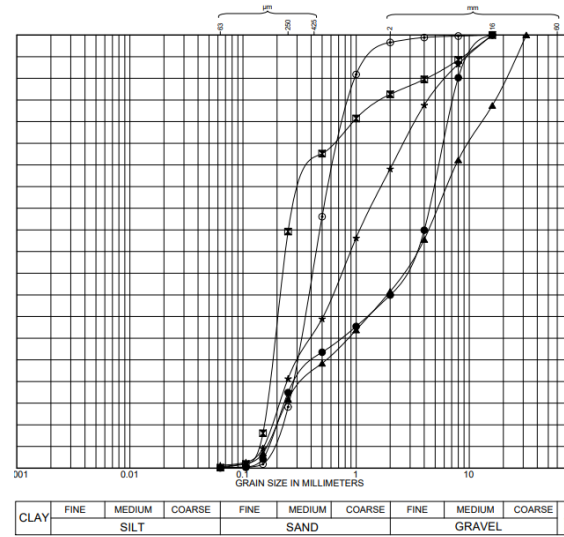
# Marine Data Exchange



The Marine Data Exchange (MDE) is a data management system used to store and publish industry survey data.

It is designed too:

- Ensure **reuse** of industry survey data.
- Allow industry data to support **evidence projects.**
- Aid The Crown Estate's **decision making.**
- Avoid **loss of survey data** due to project cancellation.





MEDIN discovery metadata standard



MEDIN data guidelines

## What has the MDE got to do with MEDIN?

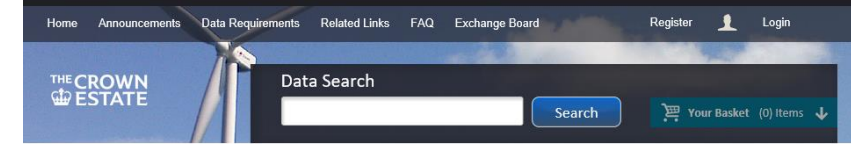
- The Crown Estate is a MEDIN sponsor.
- MEDIN discovery metadata makes MDE series **discoverable** via the MEDIN portal.
- MEDIN data guidelines are the core part of our Quality Assurance (QA) process - ensuring what has been provided is as **reusable** as possible.

# 10 years of the MDE!!

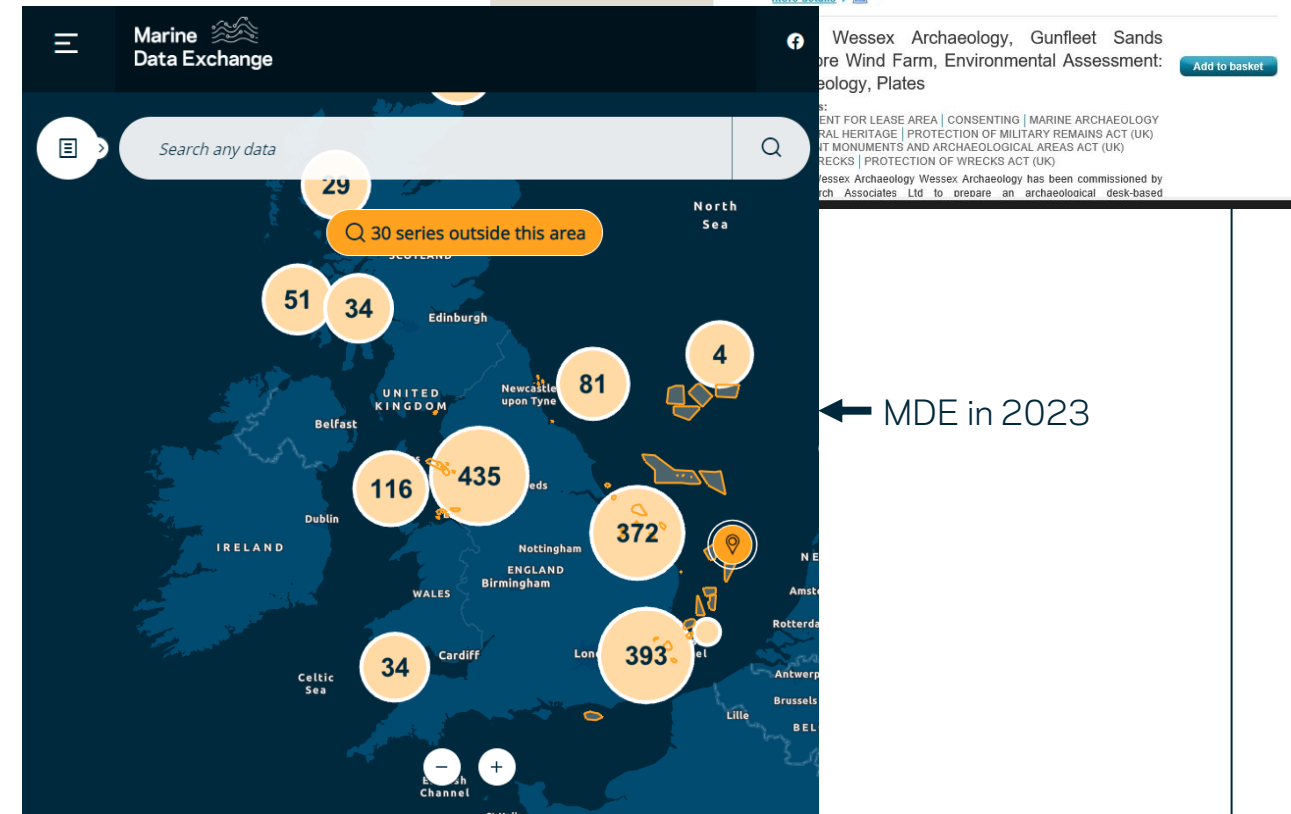
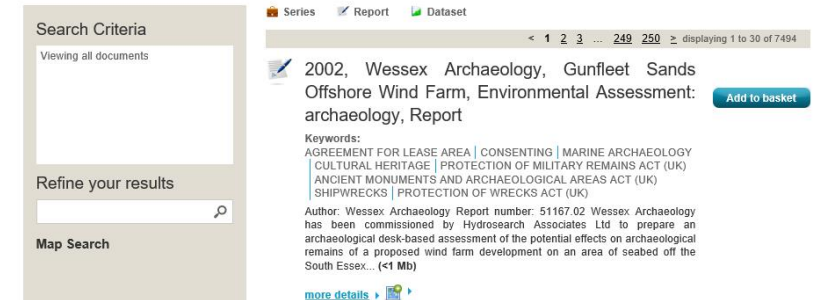
**2023** is a big year: the MDE is 10 years old!

We've come a long way in this time:

- Now hold 250+TB of multidisciplinary industry data.
- New website.
- Spatial search!



MDE in 2019 →

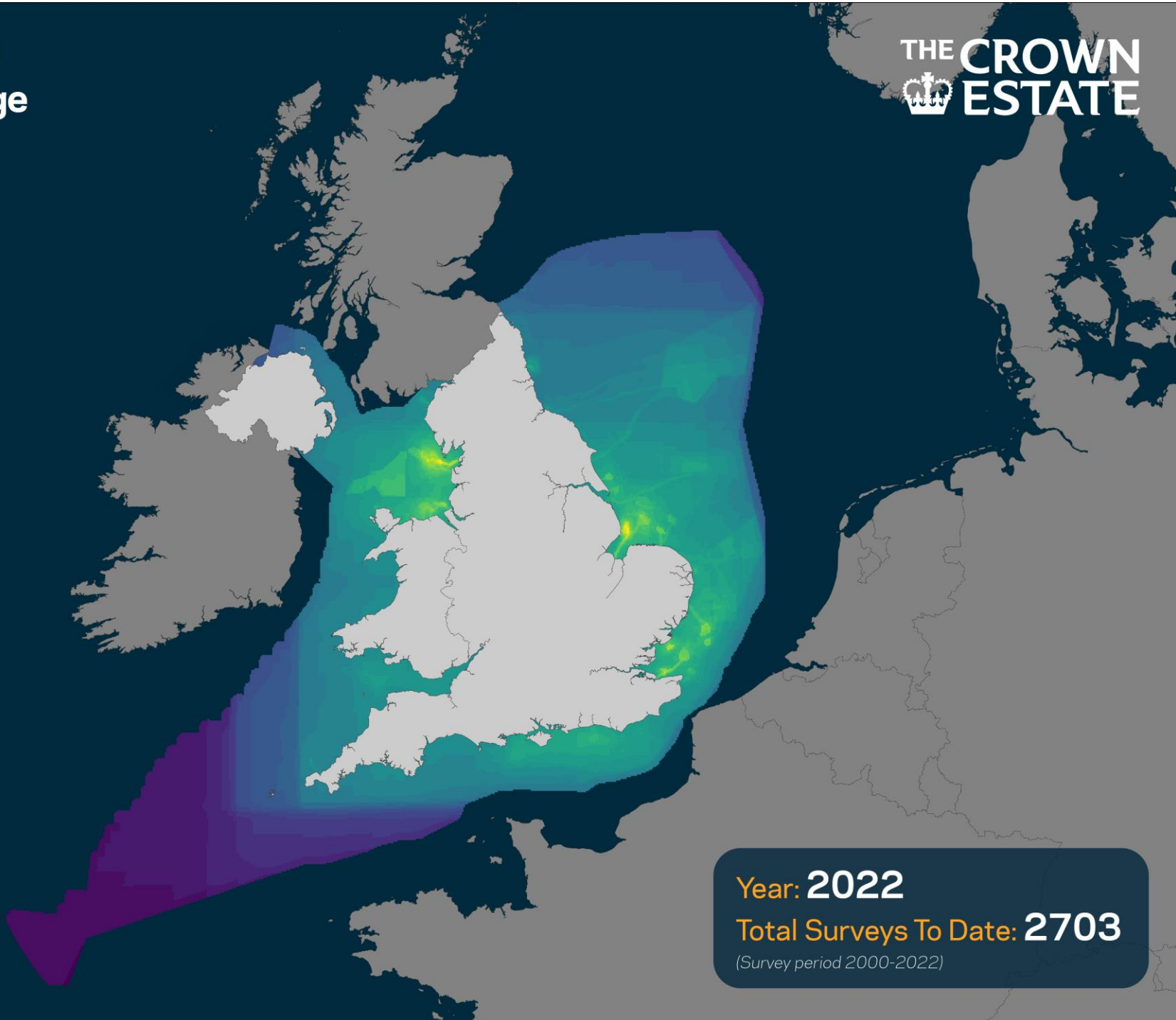


← MDE in 2023

# 20 Years of Industry Sharing Data

- In 2003 the 'Data clause' was added to offshore wind leases.
- Between 2003-2013 data shared with Collaborative Offshore Wind Research Into The Environment Programme (COWRIE).
- Since 2013 the MDE has been facilitating industry data sharing.
- Over the last 2 decades, we've seen a step change in attitude towards data sharing.





Year: 2022  
Total Surveys To Date: 2703  
(Survey period 2000-2022)

# Impact of MDE using MEDIN data guidelines

## **MEDIN compliant contracts**

- Using MEDIN guidelines in QA process has led to developers ensuring deliverables of survey contracts are MEDIN compliant.
- The enforcement of MEDIN Data guidelines by The Crown Estate has helped lead to the adoption of MEDIN standards across industry.

## **More reusable data**

- Biggest impact is more reusable data.
- Surveys on MDE collected post-2013 (date of enforcement) are better quality and more reusable.
- Developers now more likely to retain raw survey data deliverables.



# The MDE/MEDIN: What next?

## Document cracking and automation

- We're already capable of cracking documents/files uploaded to the MDE.
- Our next step is to do this automatically, and then auto-check the documents for components of the guidelines.
- The same process can be used to partially fill out a Discovery Metadata record, reducing burdens on the uploader.



# Any questions?

[www.marinedataexchange.co.uk](http://www.marinedataexchange.co.uk)

Marine   
Data Exchange

THE CROWN  
ESTATE